



Corporate Parenting Report

July 2011

Children Looked After (CLA)
Children Subject to a Child Protection Plan (CPP)
(activity to end of May 2011)

CONTENTS

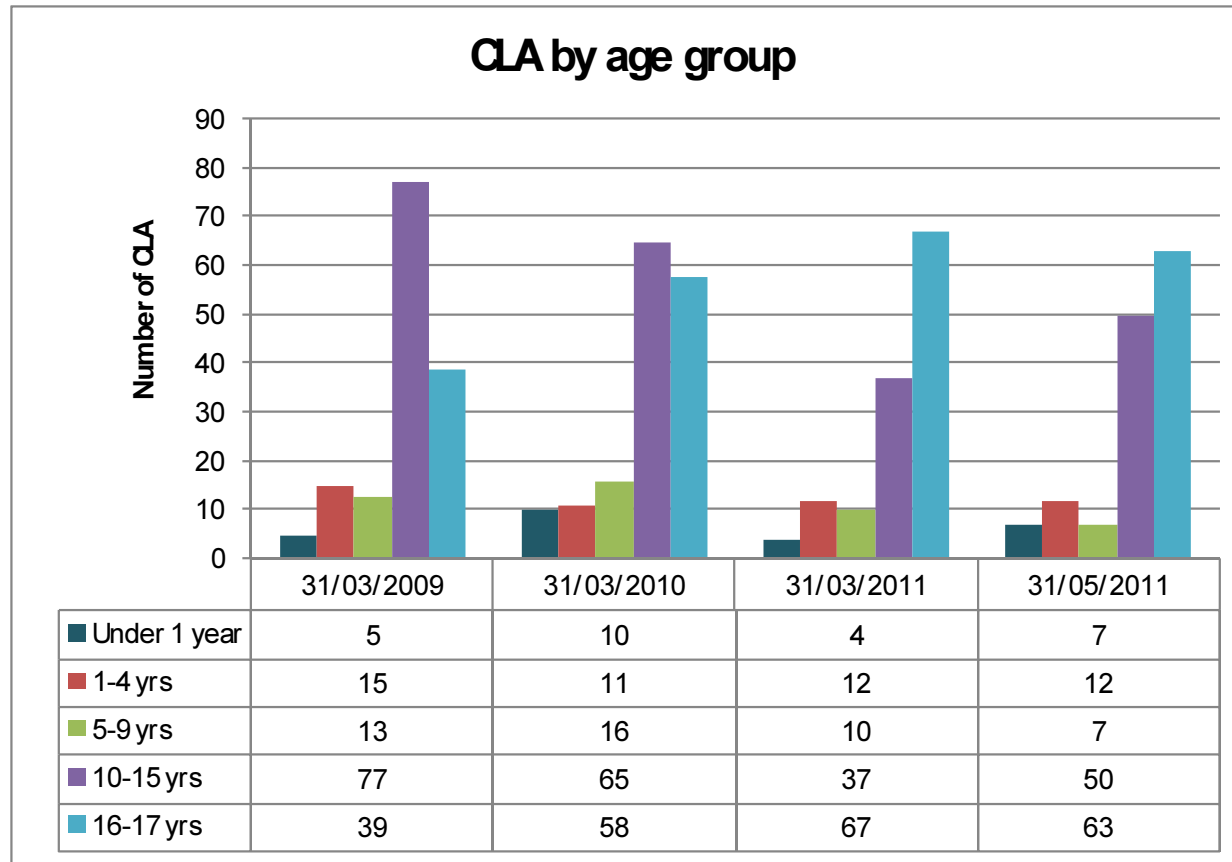
PART A: CHILDREN LOOKED AFTER (CLA)	3
1) CLA BY AGE	3
2) CLA BY ETHNICITY	4
3) CLA BY PLACEMENT TYPE	5
4) CLA BY CATEGORY OF NEED	6
5) CLA - OTHER DATA:	7
 PART B: CHILDREN SUBJECT TO A CHILD PROTECTION PLAN (CPP)	 8
6) CPP BY AGE	8
7) CPP BY ETHNICITY	9
8) CPP BY CATEGORY OF ABUSE	10
9) CPP BY DURATION OF PLAN	11
 PART C: ADDITIONAL INFORMATION	 12
10) NUMBERS OF CLA & CPP	12
11) KEY PERFORMANCE INDICATORS FOR THE END OF MAY 2011	13

Part A: Children Looked After (CLA)

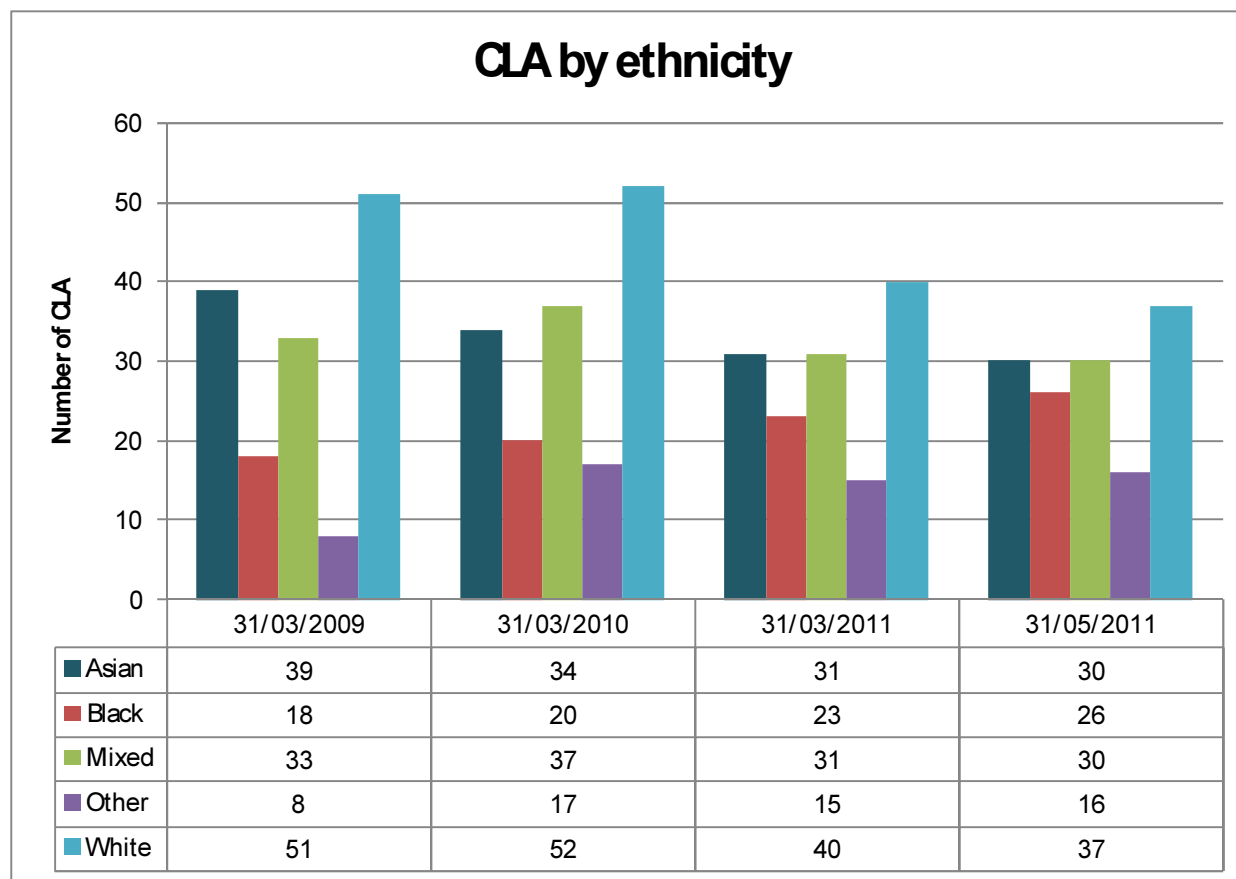
There were 139 CLA in Harrow on 31 May 2011.

There were also an additional 5 children receiving respite care / short term breaks (these are not included in the numbers in this report).

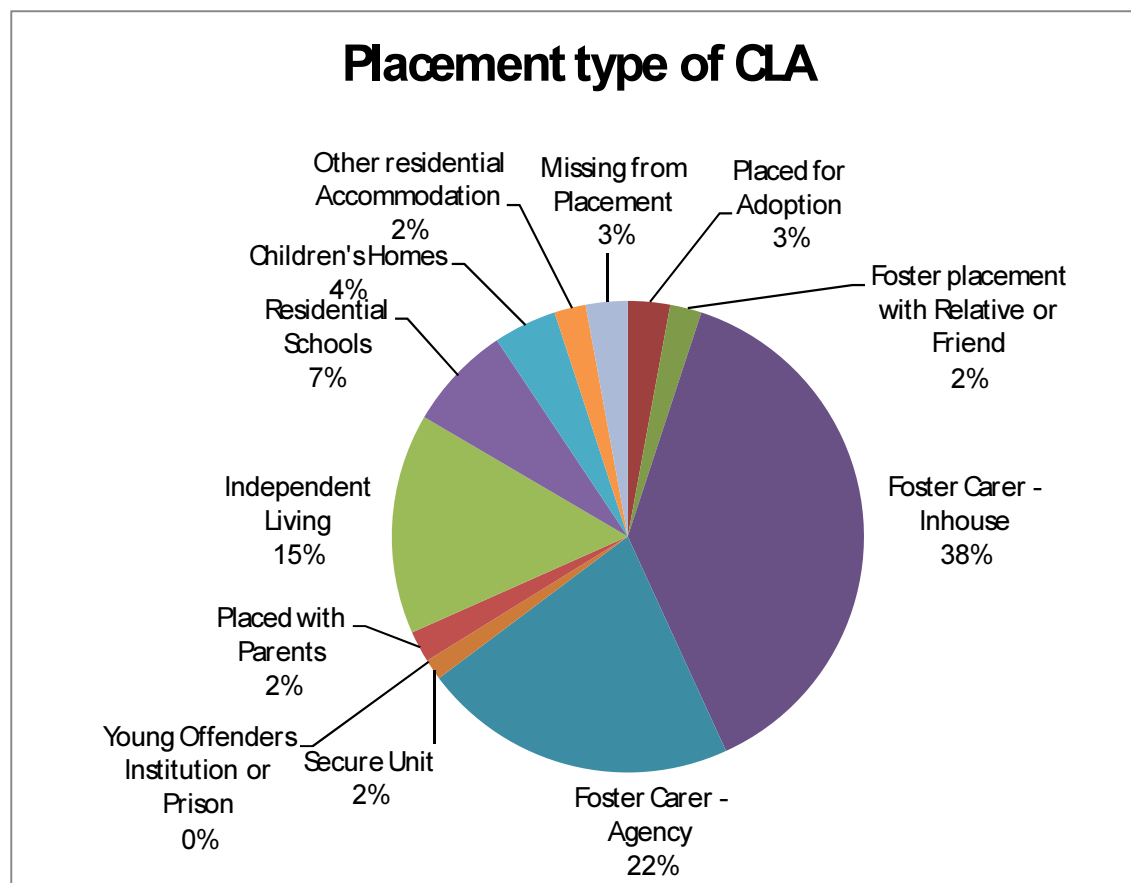
1) CLA by Age



2) CLA by Ethnicity



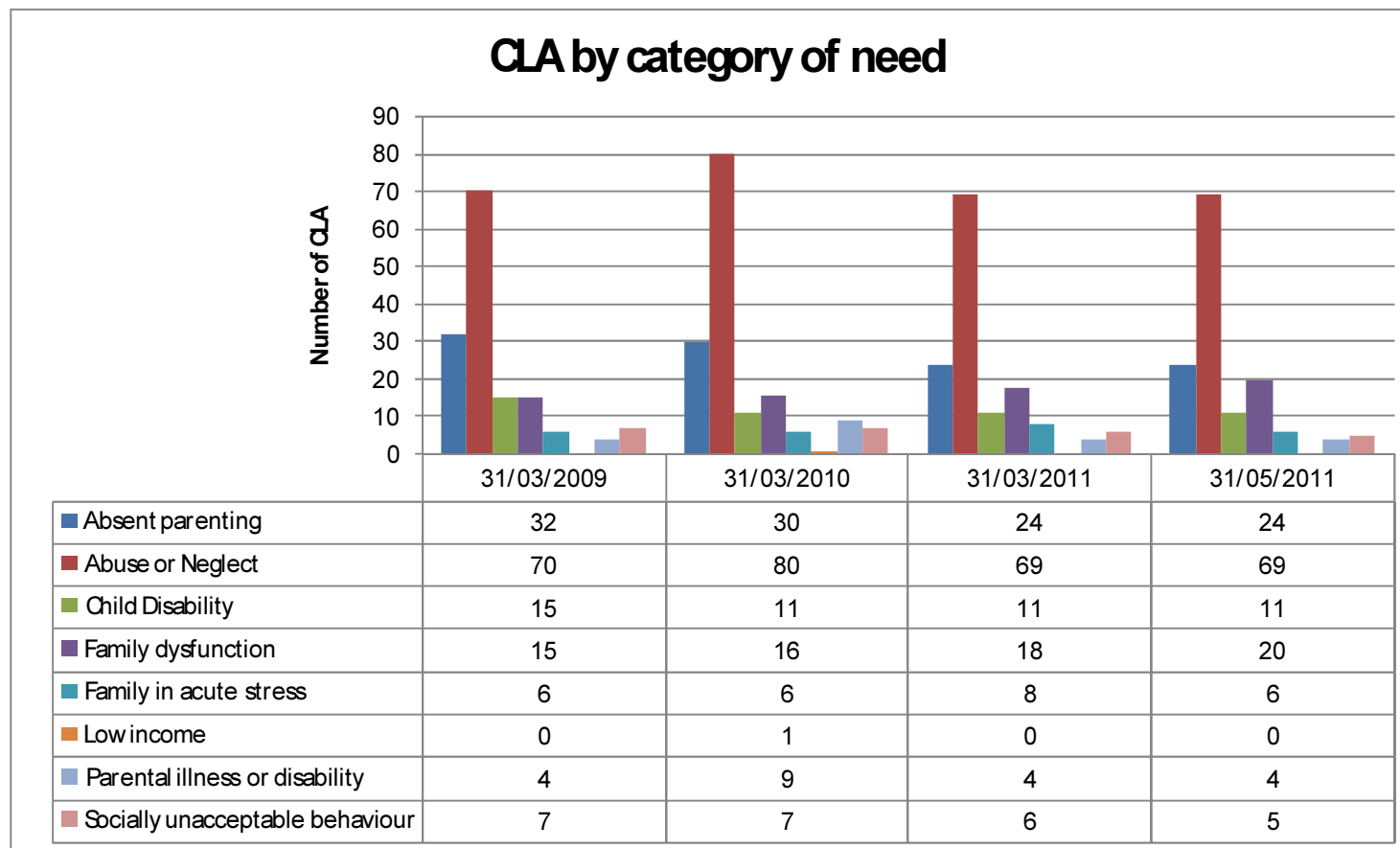
3) CLA by Placement Type



Placement Type	
Placed for Adoption	4
Foster placement with Relative or Friend	3
Foster Carer - Inhouse	53
Foster Carer - Agency	30
Secure Unit	2
Young Offenders Institution or Prison	0
Placed with Parents	3
Independent Living	21
Residential Schools	10
Children's Homes	6
Other residential Accommodation	3
Missing from Placement	4
Grand Total	

4) CLA by Category of Need

The breakdown of category of need as recorded when a child becomes looked after.



5) CLA - Other Data:

	30 Nov 2009	28 Feb 2010	31 May 2010	31 Aug 2010	30 Nov 2010	31 Jan 2011
Number of children placed out of borough:	68	66	68	81	70	71
Of those, who are placed more than 20 miles:	28	25	28	31	32	33
Social Work Allocation:	97.6%	99.4%	100%	100%	100%	100%
Adoptions & Special Guardianship Orders: (our target for adoptions is 14)	6 to date	11 to date	13 for 2009-10	15 to date	16 to date	19 for 2010-11

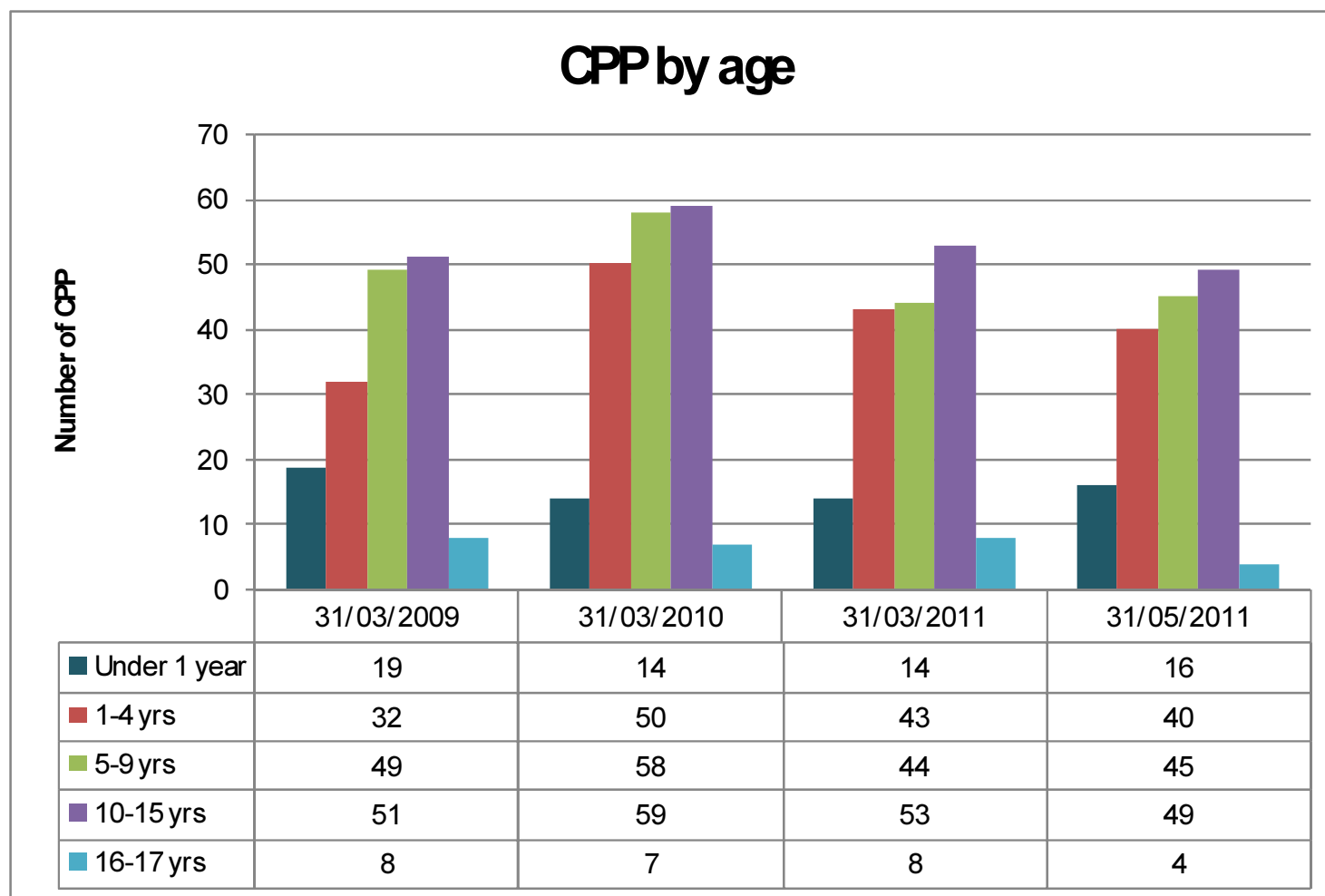
6) CLA educational attainment:

	2007	2008	2009	2010
Attained at least Level 4 in Maths at end of KS2	25%	43%	50%	50%
Attained at least Level 4 in English at end of KS2	50%	43%	50%	50%
GCSE: Attained at least 1 A* - G	46.2%	66.7%	57.1%	52.9%
GCSE: Attained 5 or more A* - G	43.2%	33.3%	57.1%	41.2%
GCSE: Attained 5 or more A* - C	5.4%	11.1%	14.3%	11.8%
GCSE: Attained 5 or more A* - C inc Eng. & Maths		new	7.1%	11.8%

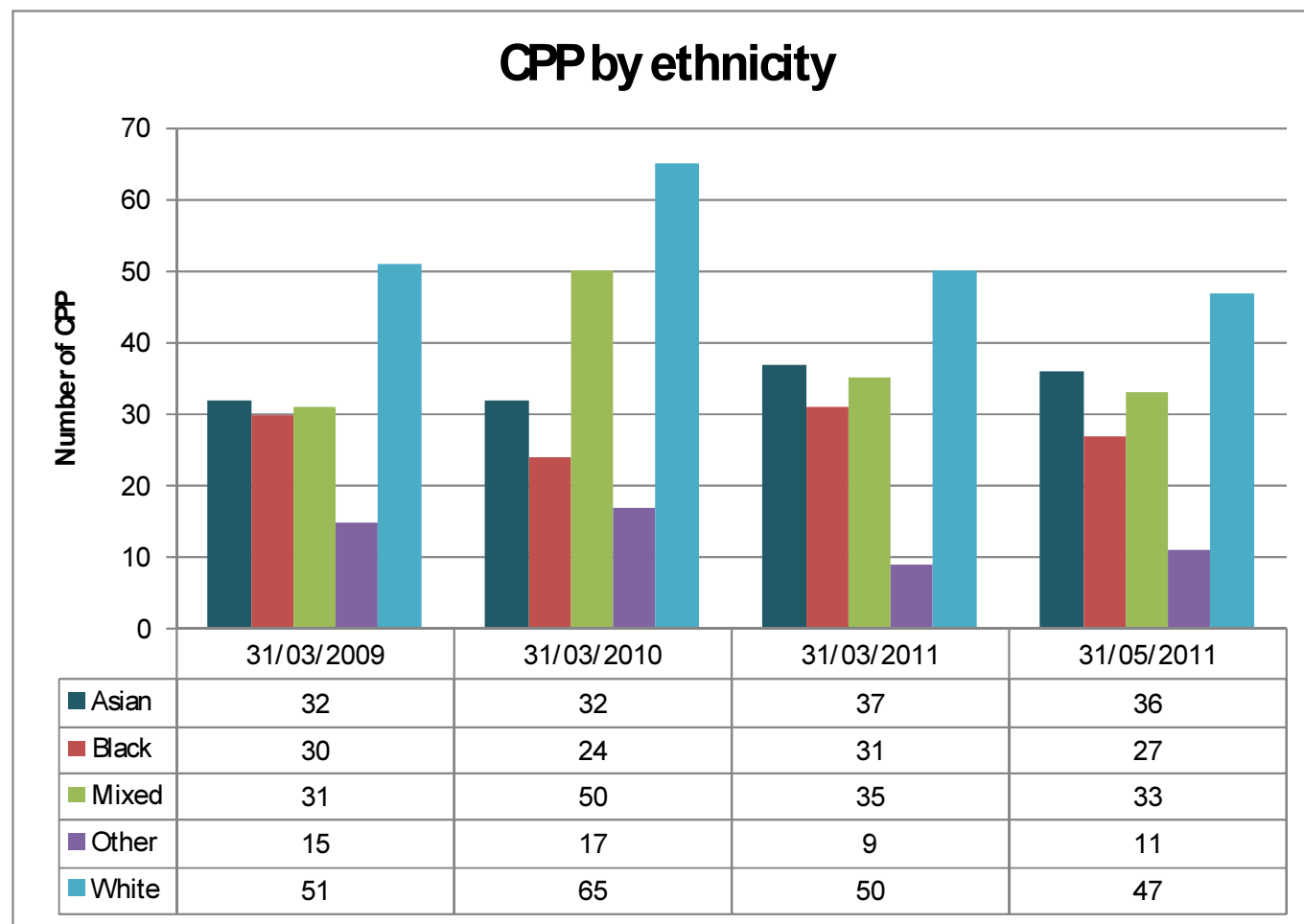
Part B: Children Subject to a Child Protection Plan (CPP)

There were 154 children who were subject to a Child Protection Plan in Harrow on 31 May 2011.

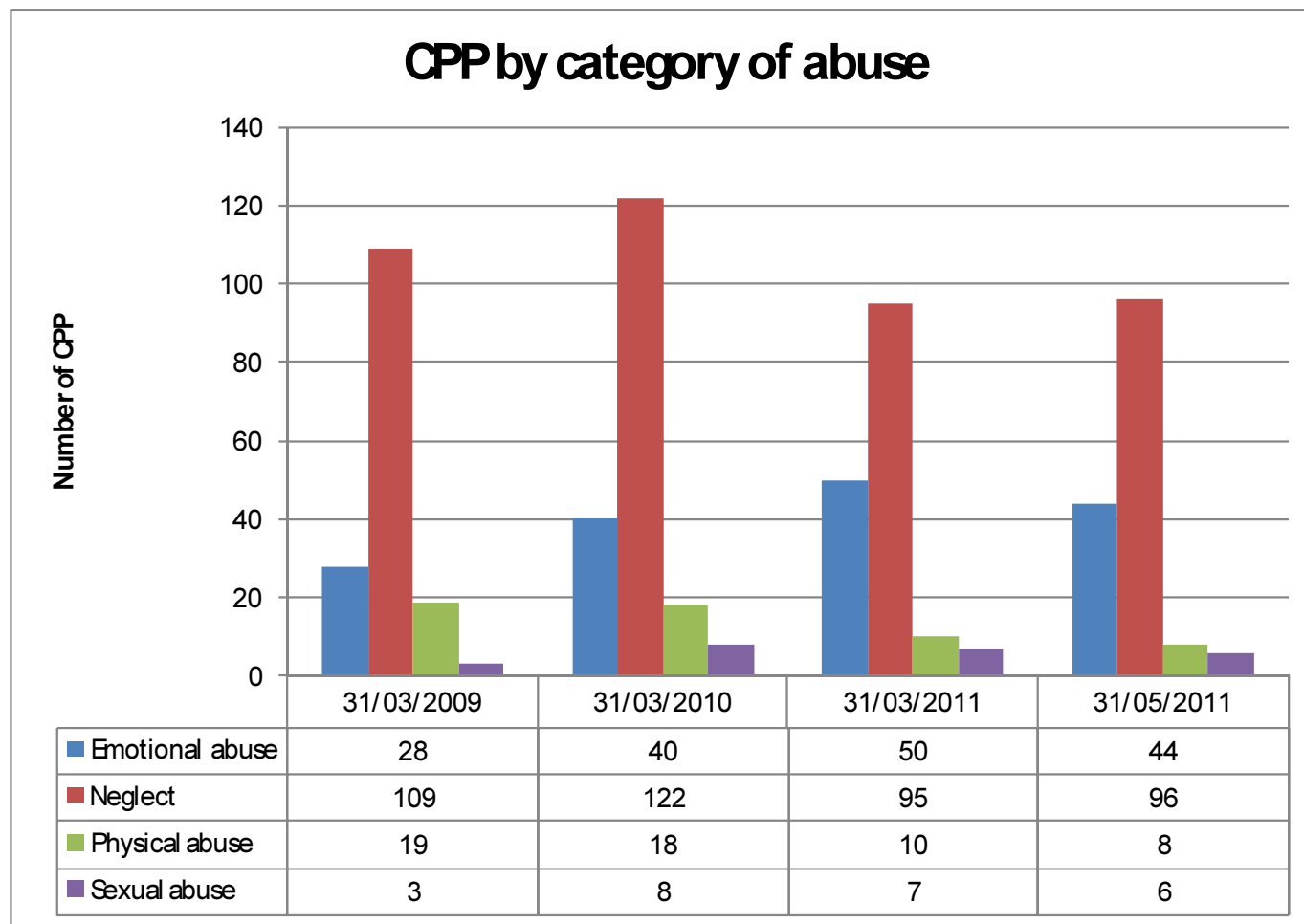
7) CPP by Age



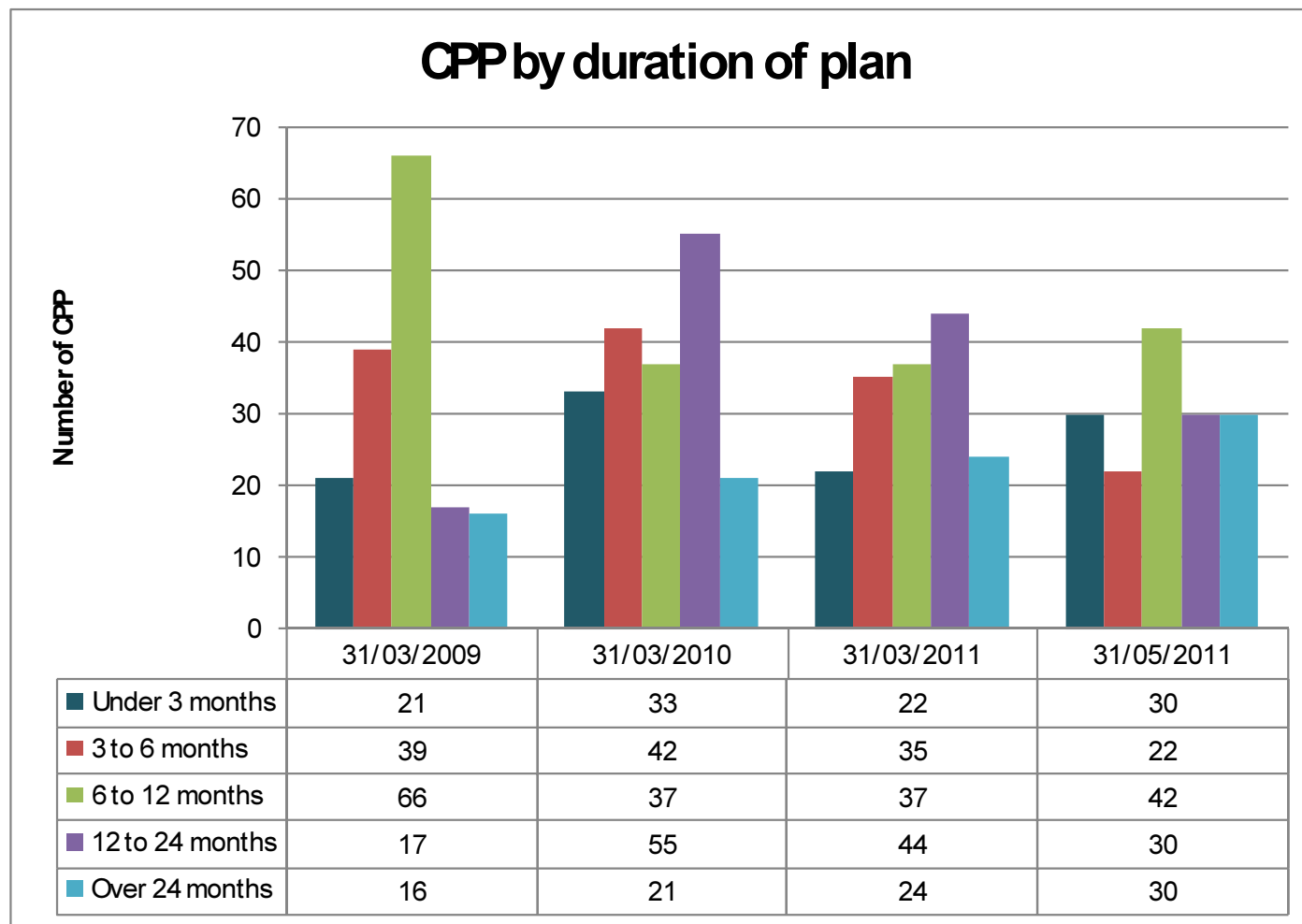
8) CPP by ethnicity



9) CPP by Category of Abuse

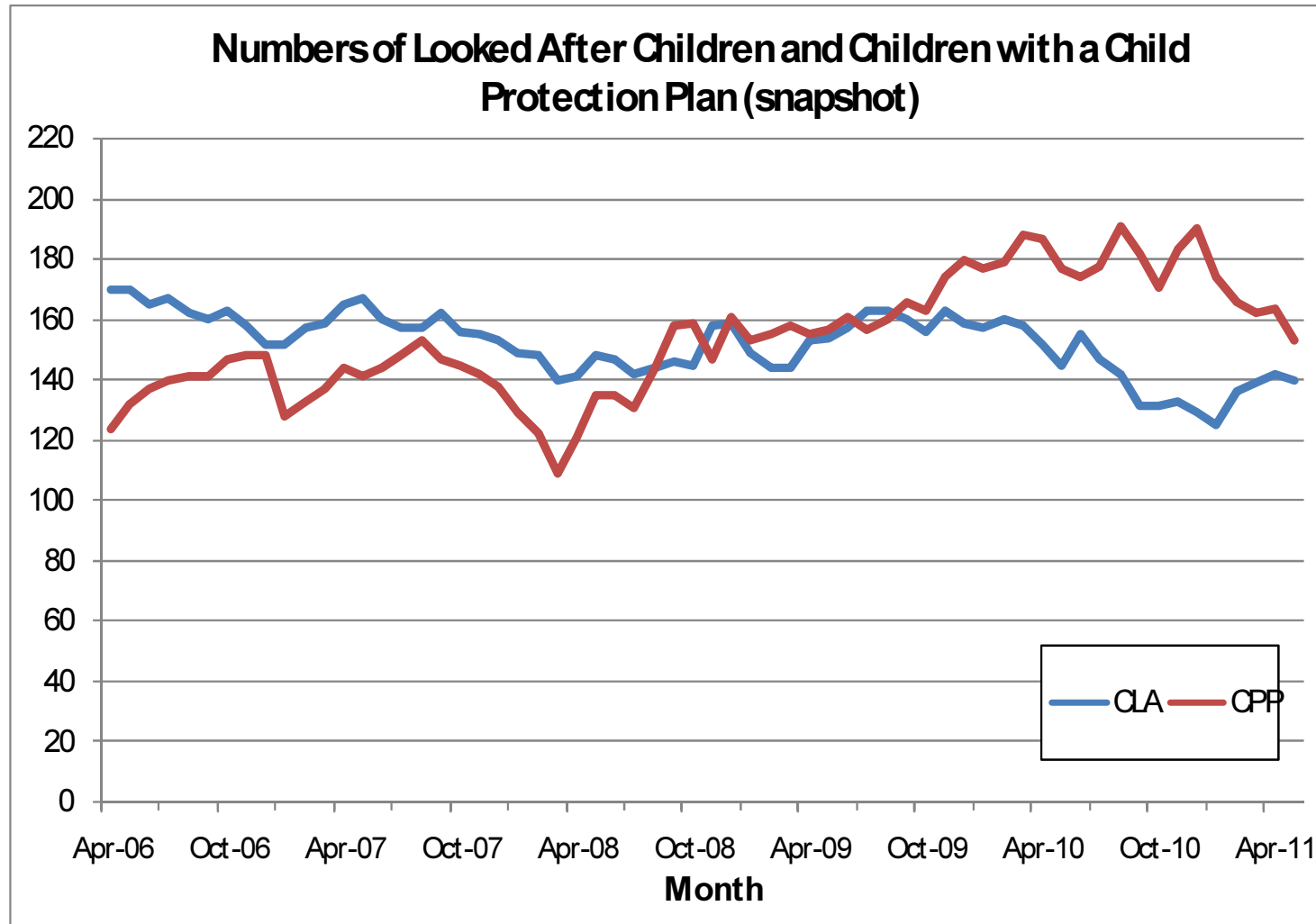


10) CPP by duration of plan



Part C: Additional Information

11) Numbers of CLA & CPP



12) Key Performance Indicators for the end of May 2011

<i>(prov.)</i>											
PI Ref	PI Description	Polarity	Harrow 08/09	Harrow 09/10	Harrow 10/11	SN 09/10	England 09/10	Target 10/11	Target 11/12	Apr 11	May 11
NI 59	Timeliness of Initial Assessments (10 working days)	High	-	85.5	82.6	74.0	75.5	100.0	85.0	89.83	92.98
NI 60	Timeliness of Core Assessments	High	76.4	84.1	80.4	73.8	78.1	83.0	83.0	92.73	91.67
NI 61	Timeliness of CLA adoptions following agency decision	High	78.6	80.0	83.3	59.7	72.4	100.0	80.0	-	-
NI 62	CLA placement stability: number of moves	Middle	9.5	11.9	10.9	11.1	10.9	10.0	11.0	-	-
NI 63	CLA placement stability: length of placement	High	68.3	68.6	74.1	67.6	68.0	68.0	68.0	70.37	66.67
NI 64	Ceased CPP that lasted 2 or more years	Middle	7.9	3.6	16.7	7.2	5.9	10.0		0.00	17.24
NI 65	CPP for 2nd or subsequent time	Middle	12.2	8.3	8.0	12.1	13.4	10.0	10.0	0.00	0.00
NI 66	Timeliness of CLA reviews	High	98.6	97.9	97.7	90.9	90.5	100.0	100.0	-	100.00
NI 67	Timeliness of CPP reviews	High	100.0	100.0	100.0	98.5	96.8	100.0	100.0	-	-
NI 68	Referrals going on to Initial Assessment	Middle	71.6	62.8	52.4	67.3	65.5	75.0		55.14	53.22
NI 147	Care leavers in suitable accommodation	High	95.5	92.0	91.7	88.7	90.3	88.0	88.0	-	-
NI 148	Care leavers in education, employment or training	High	68.2	72.0	66.7	64.6	62.1	75.0	75.0	-	-

Harrow's Statistical Neighbours (SN): Barnet, Croydon, Ealing, Enfield, Hillingdon, Hounslow, Kingston, Merton, Redbridge, Slough